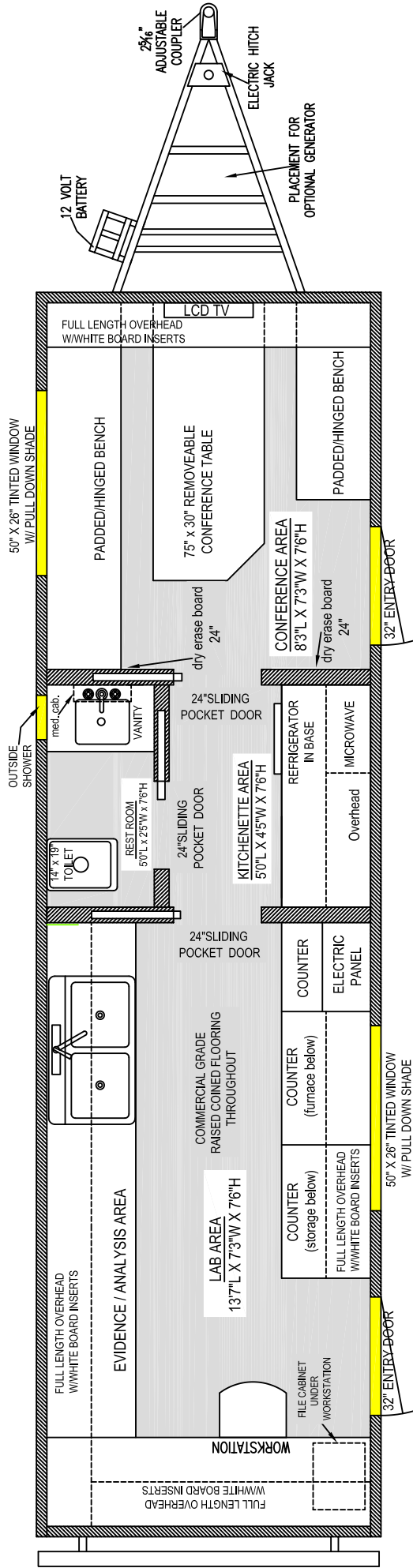


# CRIME INVESTIGATION - 35' TRAILER



## STANDARD EQUIPMENT

- 35'-0" LENGTH FRAME
- (2) 13,500 BTU A/C UNITS
- LP FURNACE 35,000 BTU OR ELECTRIC CEILING HEATERS
- GEL-COAT EXTERIOR FIBERGLASS
- FOUR(4) 500 WATT TELESCOPING SCENE LIGHTS
- AWNING
- (2) EXTERIOR 32" DOORS
- COMMERCIAL GRADE RAISED COINED FLOORING
- FIBERGLASS INTERIOR WALLS
- SLIDING POCKET DOORS
- 1 WORK STATION
- OVERHEAD CABINETS WITH WHITE BOARD INSERTS
- 12v & 110v FLUORESCENT CEILING LIGHTING THROUGHOUT
- SWIVEL CHAIRS
- 48" X 30" REMOVABLE TABLE
- KITCHENETTE (INCLUDES MICROWAVE, 110v REFRIGERATOR)
- REST ROOM (INCLUDES CASSETTE TOILET, VANITY, MEDICINE CABINET)

**Mobile Concepts**  
by SCOTTY

08/09

1-800-783-0213  
1-724-542-7640